

This newsletter is being sent to current and former The Nippon Foundation fellows, and persons who have asked to be added to the mailing list or have been introduced by The Nippon Foundation staff.



[The Nippon Foundation News] Signs of Spring

Greetings from The Nippon Foundation. March in much of Japan marks the transition from winter to spring, with weather referred to as *sankan shion*. This literally translates as “three cold, four warm,” and although the pattern does not follow a strict succession of three cold days followed by four warm days, the weather tends to alternate between winter-like and spring-like every few days.

One of the signs that spring is approaching is the blooming of *ume* trees (*Prunus mume*, commonly known as Chinese plum, Japanese plum, and Japanese apricot). Although not as well known outside Japan as the *sakura* cherry trees that will bloom a few weeks later, *ume* blossoms are a common theme in Japanese art, and viewing the blossoms is a popular seasonal activity. The *ume* fruit is also used in a variety of ways. *Umeboshi* are dried and preserved with salt, and eaten with rice or added to a glass of the distilled beverage *shochu* similar to the way lemons and limes are used in cocktails. *Umeshu*, also known as plum wine, is made by adding *ume* and sugar to a base liquor (usually *shochu*, but also sake, whiskey, or brandy) and aging. Leaving out the base liquor produces *ume* syrup, a non-alcoholic drink that can be enjoyed over ice, mixed with water or soda, or over shaved ice.



Early *ume* blossoms (left) and homemade *ume* syrup (right)

News

- 5th Demonstration Test of Fully Autonomous Ship Navigation Successfully Completed (2022.03.01)
- 3rd and 4th Demonstration Tests of Fully Autonomous Ship Navigation Successfully Completed (2022.02.07)
- Awareness Survey of 18-Year-Olds (2022.02.04)

5th Demonstration Test of Fully Autonomous Ship Navigation Successfully Completed

First successful demonstration of fully autonomous navigation in congested sea area

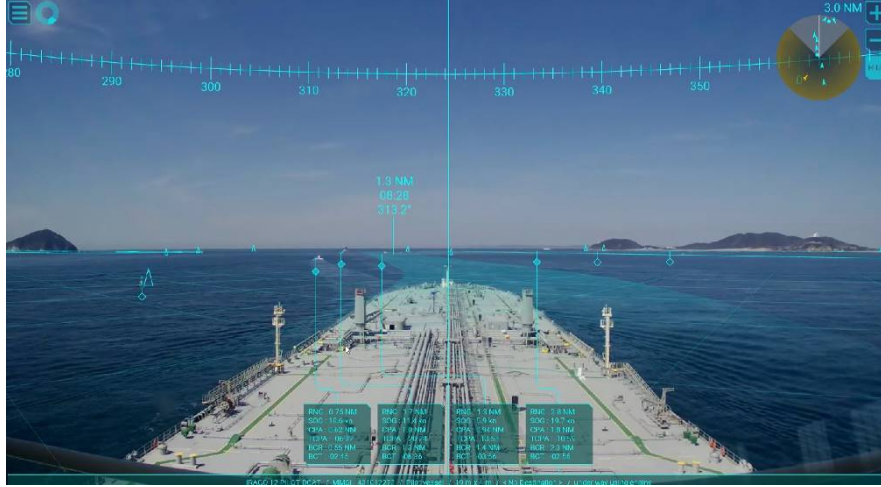


The fifth demonstration test of The Nippon Foundation MEGURI2040 Fully Autonomous Ship Program was successfully carried out between Tokyo Bay and Ise Bay from February 26 to March 1. The test demonstrated for the first time the use of a comprehensive fully autonomous navigation system for a container ship operating in a congested sea area. The system has three primary components: (1) a ship-side navigation system; (2) a land-side system that monitors and supports the ship from shore; and (3) an information and communications system that enables stable communication between the ship and land.

[Full Article](#)

3rd and 4th Demonstration Tests of Fully Autonomous Ship Navigation Successfully Completed

Seen leading to improved safety at sea

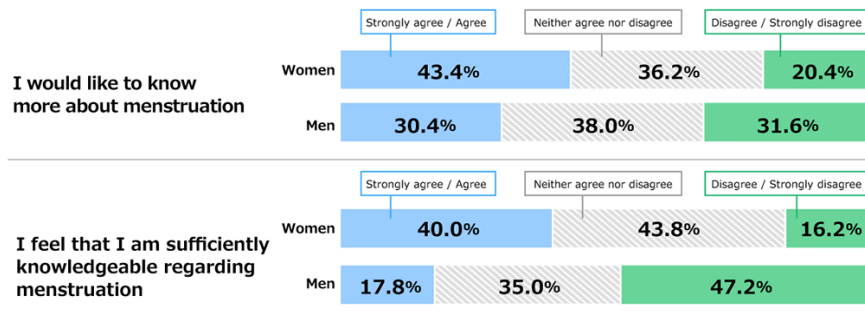


The third and fourth demonstration tests of The Nippon Foundation MEGURI2040 Fully Autonomous Ship Program were successfully carried out in late January and early February. In the third demonstration test, a fully autonomous domestic container ship navigated a 270-kilometer sea route, the first time for an operating container ship to use fully autonomous navigation. In the fourth demonstration test, a large car ferry traveled a distance of 750 kilometers over roughly 18 hours, marking the world's longest successful demonstration of fully autonomous navigation in terms of both distance and time.

[Full Article](#)

Awareness Survey of 18-Year-Olds

Menstrual Issues



The 44th installment of the Awareness Survey of 18-Year-Olds was carried on the subject of "Menstrual Issues." The survey found that many young people feel the subject is not sufficiently understood, with only 40% of women and 18% of men feeling that they had sufficient knowledge themselves, and 74% of women and 61% of men replying that men need to know more about menstruation. Roughly half of both men and women replied that classes in school were their main source of information on the subject, but less than 30% of all respondents were satisfied with the amount and content of those classes.

[Full Article](#)



[Third Japanese Consortium Successfully Demonstrates Autonomous Ship Navigation Supported by The Nippon Foundation \(2\)](#) [2022/03/09]

[Third Japanese Consortium Successfully Demonstrates Autonomous Ship Navigation Supported by The Nippon Foundation \(1\)](#) [2022/03/08]

[Free COVID-19 PCR Tests Funded by The Nippon Foundation for Tokyo Area Caregivers Top 5-Million Mark](#) [2022/03/02]

[Global Appeal 2022 Urges World Not to Forget Leprosy Even Amid COVID-19 Pandemic](#) [2022/02/25]

[Talking with Health Workers, Young People About Fighting Leprosy Amid the Pandemic \(2\)](#) [2022/02/21]

[Talking with Health Workers, Young People About Fighting Leprosy Amid the Pandemic \(1\)](#) [2022/02/18]

[2 Japanese Consortia Successfully Demonstrate the World's First Unmanned Ship Navigation Systems Supported by The Nippon Foundation \(2\)](#) [2022/02/14]

[2 Japanese Consortia Successfully Demonstrate the World's First Unmanned Ship Navigation Systems Supported by The Nippon Foundation \(1\)](#) [2022/02/10]

[Yohei Sasakawa Blog Top Page](#)

Please send your comments or suggestions by e-mail to
The Nippon Foundation Public Relations Team
email : pr@ps.nippon-foundation.or.jp
TEL. +81-3-6229-5131 / FAX. +81-3-6229-5130 .



[Remove an existing address](#) | [Add a new address](#)

To change an existing address, [remove the existing address](#), then [add a new address](#).